

SanCeram Close Coupled WC Doc M Pack - Left Handed



SCDMCCLG: SanCeram Close Coupled WC Doc M Pack - Left hand, Dark Grey

Code

SCDMCCL(W/B/G/SS)

Description

Complete Doc M compliant WC pack in one box

Pack includes:

- Close Coupled WC pan
- Seat only
- Close Coupled Dimple Lever Cistern
- RHTH Wash Hand Basin
- Strainer Waste
- Bottle Trap
- TMV3 Sequential Mixer Tap
- 5 x 600mm Straight Grab Rail
- 1 x 800mm Hinged Grab Rail with toilet roll holder

Features

- LABC approved
- Seat & grab rails supplied in White, Blue or Dark Grey
- Suitable for all sectors excluding healthcare

Product options:

- SCDMCCLW: White pack
- SCDMCCLB: Blue pack
- SCDMCCLG: Dark Grey pack
- SCDMCCLSS: Stainless Steel*



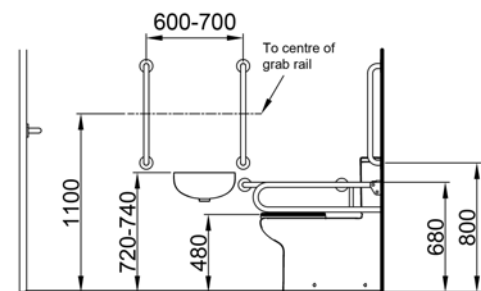
SCDMCCLW: SanCeram Close Coupled WC Doc M Pack - Left hand, White



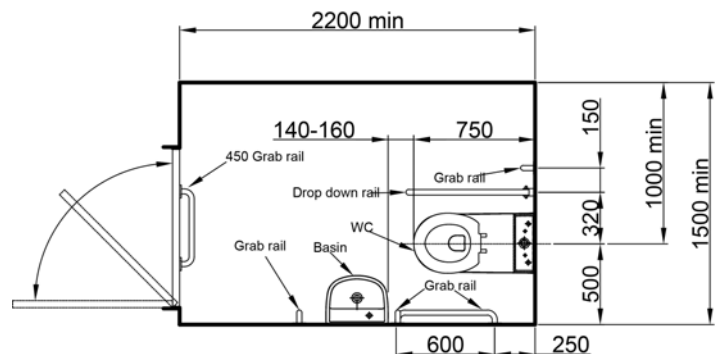
SCDMCCLB: SanCeram Close Coupled WC Doc M Pack - Left hand, Blue



SCDMCCLSS: SanCeram Close Coupled WC Doc M Pack - Left hand, Stainless Steel



Above is for guidance only, refer to relevant building regulations



Drawing for reference only & may not reflect the handing of the pack ordered

* Stainless Steel pack provided with white seat