



SCDMCCR<sub>G</sub>: SanCeram Close Coupled WC Doc M Pack - Right hand, Dark Grey

## SanCeram Close Coupled WC Doc M Pack - Right Handed

### Code

SCDMCCR(W/B/G/SS)

### Description

Complete Doc M compliant WC pack in one box

### Pack includes:

- Close Coupled WC pan
- Seat only
- Close Coupled Dimple Lever Cistern
- LHTH Wash Hand Basin
- Strainer Waste
- Bottle Trap
- TMV3 Sequential Mixer Tap
- 5 x 600mm Straight Grab Rail
- 1 x 800mm Hinged Grab Rail with toilet roll holder
- 1 x Back Rest

### Features

- LABC approved
- Seat & grab rails supplied in White, Blue or Dark Grey
- Suitable for all sectors excluding healthcare

### Product options:

- SCDMCCR<sub>W</sub>: White pack
- SCDMCCR<sub>B</sub>: Blue pack
- SCDMCCR<sub>G</sub>: Dark Grey pack
- SCDMCCR<sub>SS</sub>: Stainless Steel\*



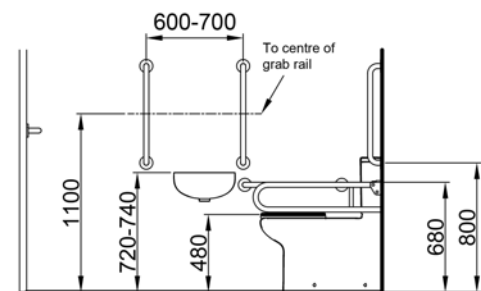
SCDMCCR<sub>W</sub>: SanCeram Close Coupled WC Doc M Pack - Right hand, White



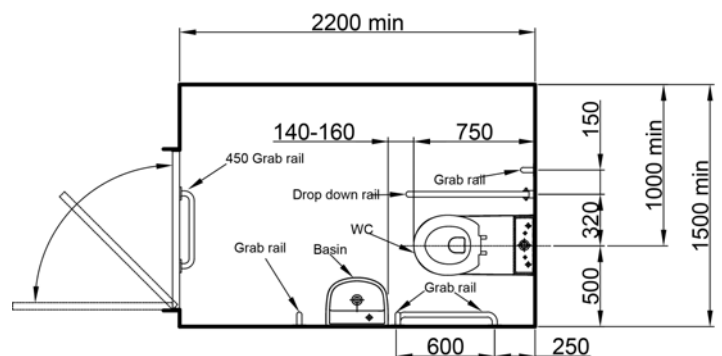
SCDMCCR<sub>B</sub>: SanCeram Close Coupled WC Doc M Pack - Right hand, Blue



SCDMCCR<sub>SS</sub>: SanCeram Close Coupled WC Doc M Pack - Right hand, Stainless Steel



Above is for guidance only, refer to relevant building regulations



Drawing for reference only & may not reflect the handing of the pack ordered

\* Stainless Steel pack provided with white seat