

Kemsley Wall Mounted Basin Mixer Tap - Chrome

Code

KMBW103

Description

Kemsley wall mounted mounted basin mixer tap with easy box.

Features

- Easy box installation
- Horizontal or vertical installation
- Ceramic cartridge
- WRAS approved
- Available in 4 finishes

Technical Specification:

Max operating pressure: 6.0 bar

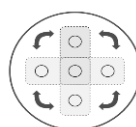
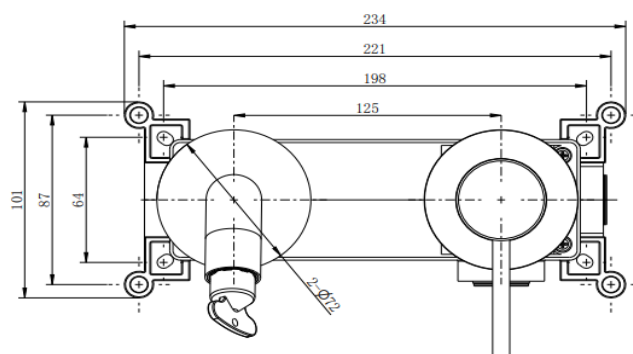
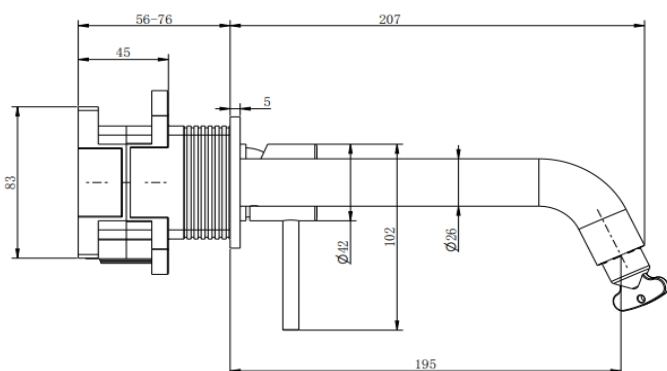
Min operating pressure: 0.5 bar

Finish:

Chrome

Flow Rate (Bar – Ltr/Min):

Bar	0.5	1.0	1.5	2.0	3.0	
Un-regulated	5.3	8.0	10.1	11.9	14.9	



Interchangeable design for horizontal & vertical installation





Kemsley Wall Mounted Basin Mixer Tap - Matt Black

Code

KMBW103MB

Description

Kemsley wall mounted mounted basin mixer tap with easy box.

Features

- Easy box installation
- Horizontal or vertical installation
- Ceramic cartridge
- WRAS approved
- Available in 4 finishes

Technical Specification:

Max operating pressure: 6.0 bar

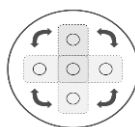
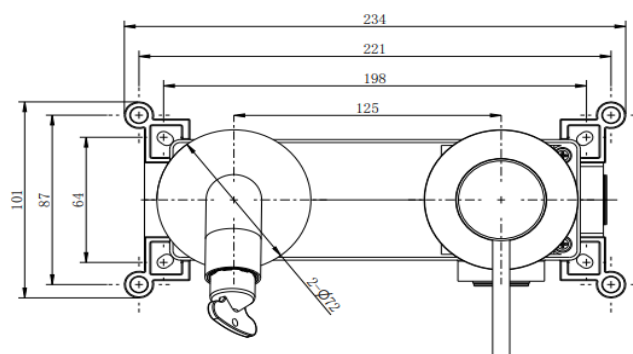
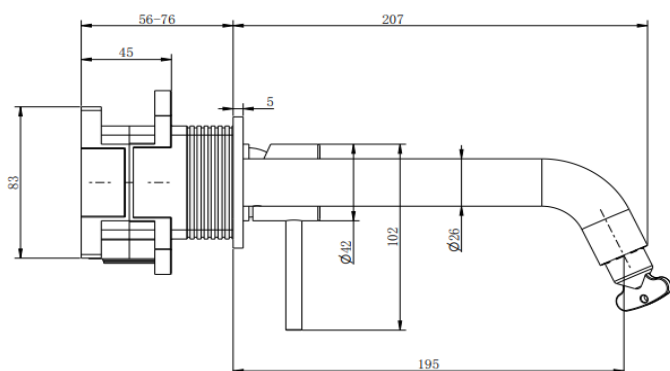
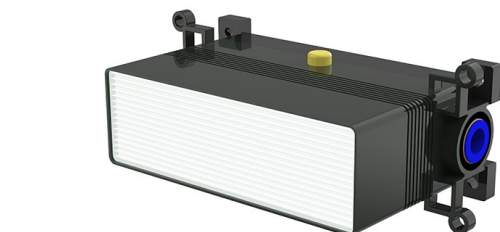
Min operating pressure: 0.5 bar

Finish:

Matt Black

Flow Rate (Bar – Ltr/Min):

Bar	0.5	1.0	1.5	2.0	3.0	
Un-regulated	5.3	8.0	10.1	11.9	14.9	



Interchangeable design for horizontal & vertical installation





Kemsley Wall Mounted Basin Mixer Tap - Gunmetal Grey

Code

KMBW103MG

Description

Kemsley wall mounted mounted basin mixer tap with easy box.

Features

- Easy box installation
- Horizontal or vertical installation
- Ceramic cartridge
- WRAS approved
- Available in 4 finishes

Technical Specification:

Max operating pressure: 6.0 bar

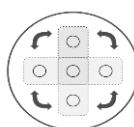
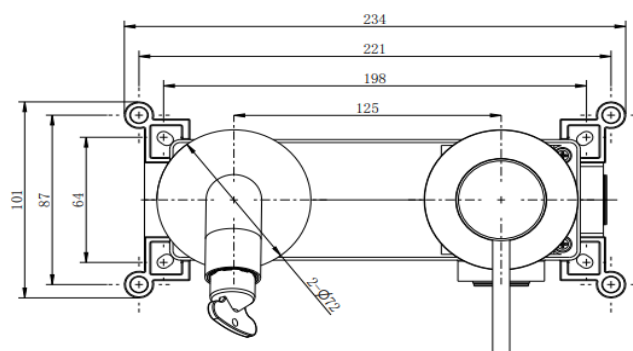
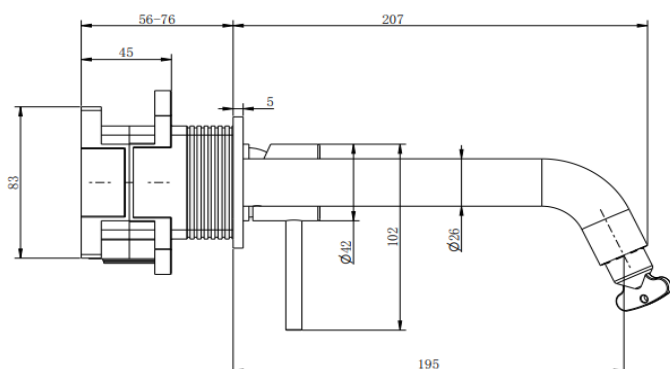
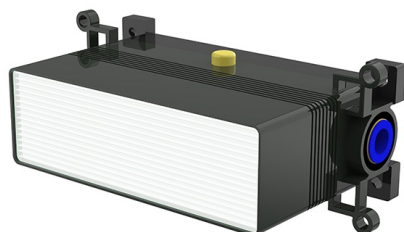
Min operating pressure: 0.5 bar

Finish:

Gunmetal Grey

Flow Rate (Bar – Ltr/Min):

Bar	0.5	1.0	1.5	2.0	3.0	
Un-regulated	5.3	8.0	10.1	11.9	14.9	



Interchangeable design for horizontal & vertical installation





Kemsley Wall Mounted Basin Mixer Tap - Brushed Brass

Code

KMBW103BB

Description

Kemsley wall mounted mounted basin mixer tap with easy box.

Features

- Easy box installation
- Horizontal or vertical installation
- Ceramic cartridge
- WRAS approved
- Available in 4 finishes

Technical Specification:

Max operating pressure: 6.0 bar

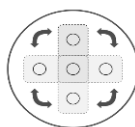
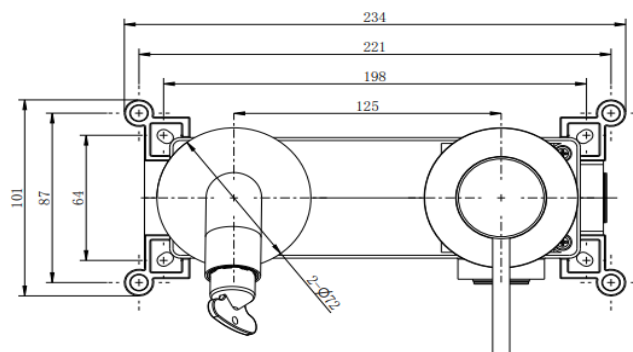
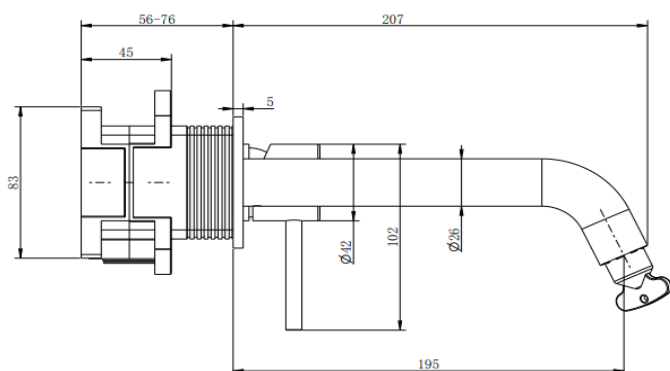
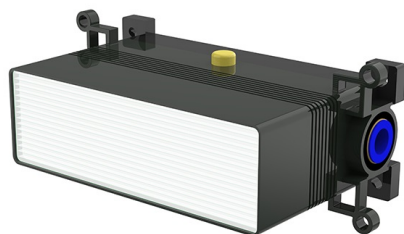
Min operating pressure: 0.5 bar

Finish:

Brushed Brass

Flow Rate (Bar – Ltr/Min):

Bar	0.5	1.0	1.5	2.0	3.0	
Un-regulated	5.3	8.0	10.1	11.9	14.9	



Interchangeable design for horizontal & vertical installation

